

COMPANY PROFILE



INTSIMBI SOLUTIONS SA (PTY) LTD

CAPE TOWN





About us.

IINSTIMBI Solutions SA (Pty) Ltd is an Industry leading Manufacturer and Supplier of Innovative Building Technology Materials.

Based in Cape Town, in the Western province of South Africa, IINSTIMBI Solutions SA (Pty) Ltd is a Level 1 BBBEE, 100% Black owned, light steel manufacturing company and leading manufacturer & supplier of lightweight steel roof trusses, floor joists, frame structures and associated alternative, innovative and energy efficient building products.

IINSTIMBI Solutions SA (Pty) Ltd, provides service excellence, competitive prices and superb product ranges within the built environment and the company prides itself in proudly South African products. IINSTIMBI Solutions SA (Pty) Ltd supplies a vast range of clientele within South Africa and the SADC region including Namibia, Botswana and Swaziland.



Vision.

With a VISION of becoming a leading player in the manufacturing and construction of Alternative Building Systems, the company seeks to expand its product line to include the Fortis Building System.

The Fortis Building System defined as an innovative lightweight steel reinforced concrete walling system consisting of profiled punched metal panels, top and bottom U-Channels, horizontally spaced steel deformed reinforcing bars, pre-welded steel mesh, shotcreted or hand packed structural mortar application and plaster layers to complete the structure.



Mission.

Our mission is to be the leading player in the manufacturing of light weight steel in SADC.

To showcase the benefits of light steel construction compared to conventional building methods in order to build better, faster and more cost effective.



Our products.

IINSTIMBI SOLUTIONS SA (PTY) LTD specialise in a vast range of innovative alternative building technologies

Light steel frame structures.

Light Steel is a green building method. More than 95% of the water used in the steel making process is recycled and returned, often cleaner than when it was taken from the source. Every piece of steel used in construction contains recycled content.

Light steel has been tried and tested for decades, withstanding natural disasters including tornadoes, earthquakes, fires and hurricanes, and has become a big leader for green building methods in South Africa.

Light Steel Structures are SABS, NHBC and BANK Approved. All structures are designed, manufactured and engineered according to the SANS 517 building code for light steel structures.

Light Steel wall frames are light, straight and true, a product ideal for temporary or emergency accommodation due to its mobility and speed of erection. It is up to 50% lighter than a wooden frame. No labour intensive bricklaying or wood packing, paneling or straightening is required.

Wall frame structures can be erected on top of any type of foundation or existing structure for a second storey.

No termite protection or maintenance is ever required, as steel frames are 100% termite proof!

Pre-Braced in our factory, flush walls with no protrusions to affect linings. There are various interior and exterior cladding and finishing options available.

Light steel floor joists can be used for single or double storey's and is much stronger than timber allowing for longer spans with no vertical support. Our beams are much lighter than your conventional steel beams and no welding or steelworks are required.

Our joists are:

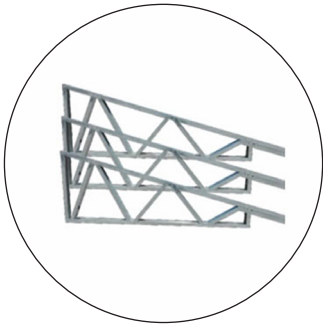
- Light weight and high strength.
- Any size available from 200mm up to 600mm.
- Spans available over 8 meters.
- Fall for water runoff available for decking and balconies.

- No infestation of termites, rotting, mold, moist absorption or shirking is present and no additional preservative chemicals are required over and above the galvanizing process to treat steel, unlike the treatment of timber.

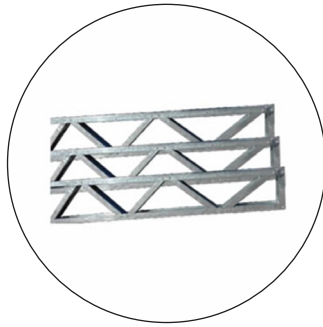
IINSTIMBI Solutions SA (Pty) Ltd offers complete turnkey solutions from architect drawings, engineering, we have close working relations with our or the clients engineer, erection and building, right through to the finishes of your choice. We will assist you with any project big or small. Single and double storey homes, RDP houses, schools, multi-units, site offices, garages, tuck shops, bus and taxi shelters, garden and tool sheds, carports, decks, pavilion, partitioning in existing structures, whatever your needs.



Our products.



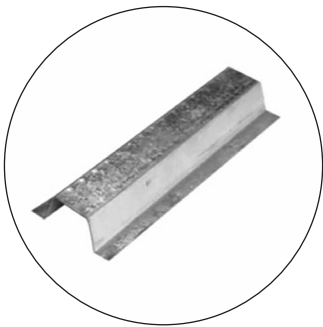
Roof Trusses.



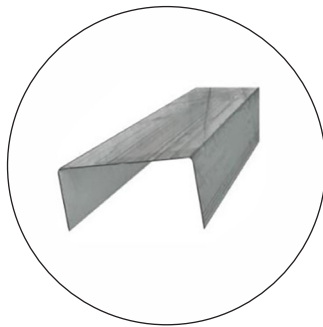
Girders.



Purlins.



Branding.



U-Channels.



Lipped-Channels.



Our products.

Magnesium oxide boards.

IINSTIMBI Solutions SA (Pty) Ltd is a manufacturer and distributor of Magnesium Oxide which is a type of sheathing board made available for the cladding of light gauge steel building construction. It is supplied in sheet form consisting of various thicknesses and sizes.

It is categorized in different grades such as smooth finish, rough texture and utility grade.

Main characteristics:

- Density (g/cm³) : 0.85-1.05
- Bending strength (M/mm) : 18 -27Mpa
- Breaking load : 113-498
- Thermal resistance:1.14m²k/w
- Sound Insulations:>44dB
- Shrinking rate when heated:1.0%
- Facial surface hardness 5.9-8.3 Mpa
- Surface moisture absorption no more than 0.34%

- Water absorption capacity 15%
- Vapour permeability, mg/m²*h*Pa 0.11-0.14
- Rate of length change (wetting %) : Below 0.26%
- Non flammability : Fire proof 1st grade
- Available in the following thicknesses 4mm, 6mm, 9mm and 12mm

Zero - H²O water-less dry toilet system.

IINSTIMBI Solutions SA (Pty) Ltd is the manufacturer and sole distributor of an innovative solution for the VIP toilets constructed largely in either rural areas or in areas where the municipal sewer infrastructure is not in place.

Zero-H²O Dry Toilets are a waterless toilet system that provides a safe, non-polluting and cost-effective solution to the worldwide sanitation problem.

Not only does it save on water use, but it is entirely isolated from the surrounding environment and cannot contaminate underground water resources.

The system utilises a natural biological process to break down human waste into a dehydrated odourless compost-like material.

- Use it in the making of compost
- Dispose of it by using municipal waste services
- Use it as a source of fuel

Large objects like beverage cans, disposable nappies or other objects accidentally dropped down the chute

will not block the system, it is however not advisable to do this

Features:

- No plumbing required
- No drains
- No pipes
- Water-free
- Low odour levels
- Chemical free
- Relatively light and easy to install
- Product extras
- Urinal (Standard)
- Each toilet comes standard with a urinal which is wall mountable either in a existing home or inside a toilet hut.

The following is a brief description of the ZERO-H²O toilet concept as well as its main features.

The human excrement falls down a vertical chute (2) and into one end of a specially designed helical screw conveyor (3). Every time the toilet lid (1) is lifted, a mechanism rotates the conveyor.

With each rotation the human excrement slowly moves along, taking approximately twenty-five days before falling into a reusable collection bag (4).

It takes six months for the bag to fill with dry and odourless waste.

Through the uniquely designed ventilation pipe (5), adequate airflow is provided for the dehydration / evaporation, deodorizing process.

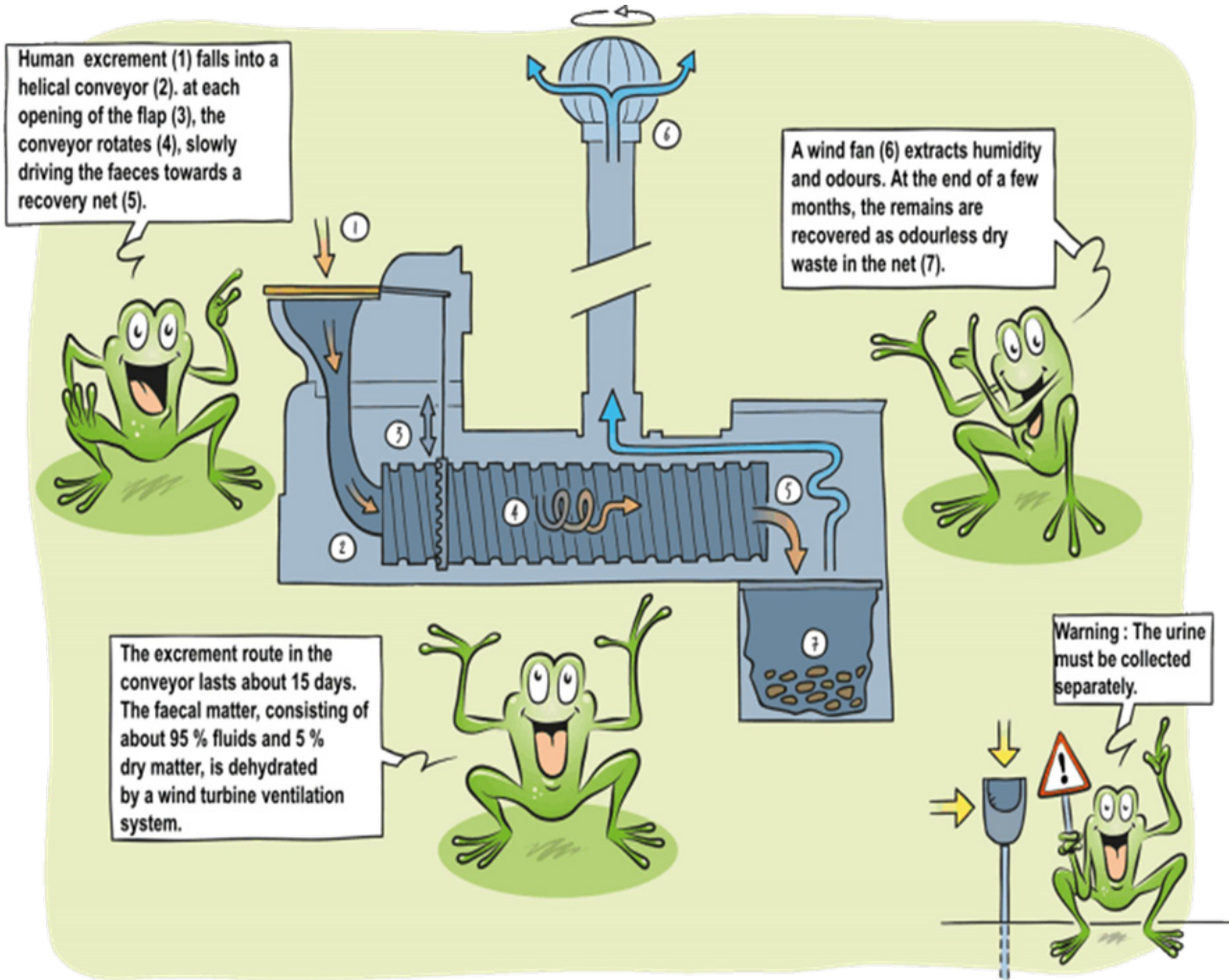
Human excrement consists of roughly 95% moisture. As the solids dry in the conveyer the urine and moisture is vented into the atmosphere. The solid waste then dries into a compost-like material, roughly 5 - 10% of its original mass.

The dry waste is manageable and can be processed in the following ways.



Our products.

Zero - H₂O water-less dry toilet system. (cont)





Our products.

Steel profiled roof sheeting & accessories.

With the constant demand for the look of roof tiles but the affordability of IBR Roof sheeting, IINSTIMBI Solutions SA (Pty) Ltd now has the alternative. We manufacture a 1100mm wide metal roof cover that looks almost exactly like the conventional clay or concrete roof tile.

The sheet is manufactured custom to the length of roof from eave to ridge. The minimum thickness of our roof sheeting is standard 0,58mm or 0,8mm on request. All colors are currently over the whole demand range of the Chromadek Range.

Product description & features

Cobertura is a premium roof metal sheet profile from IINSTIMBI Solutions SA (Pty) Ltd that has the appearance of clay or concrete tiles but the strength and light weight advantage of steel. It is available in a range of standard Chromadek colors and in various thicknesses.

Cobertura is available in minimum quantities and cut to length on request. Cobertura is lightweight, durable and esthetically pleasing product that is ideal for a wide range of end users.

Material options

Galvanized - Chromadek Z200 Color Coated Steel at 0.58mm thickness.

Roof pitch

Cobertura can be used on a roof pitch from minimum 10degree roof pitch.





Our products.

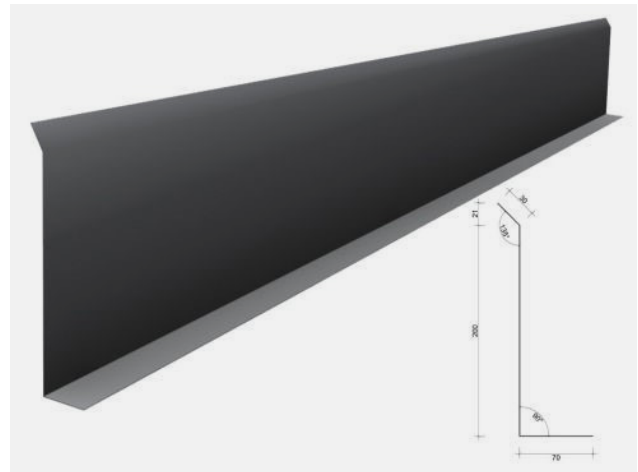
Cobertura roof tile flashings.

Cobertura Roof Tile Profile Flashings are manufactured from 0,58mm gauge Chromadek sheeting to compliment the range of Metal Roof Tiles, all manufactured by IINSTIMBI Solutions SA (PTY) LTD.

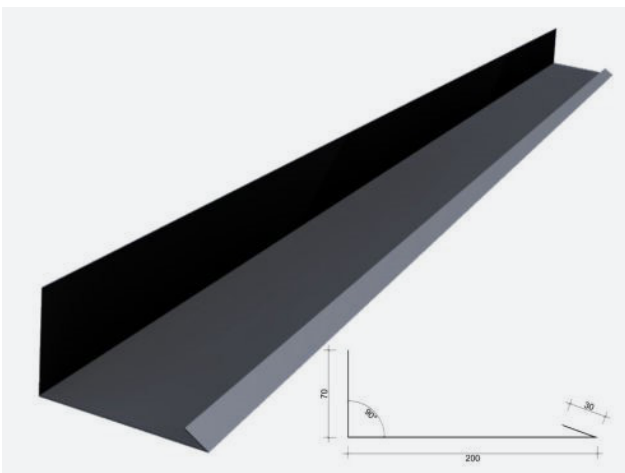
Specialised Flashing can be custom made to client requirements on request.



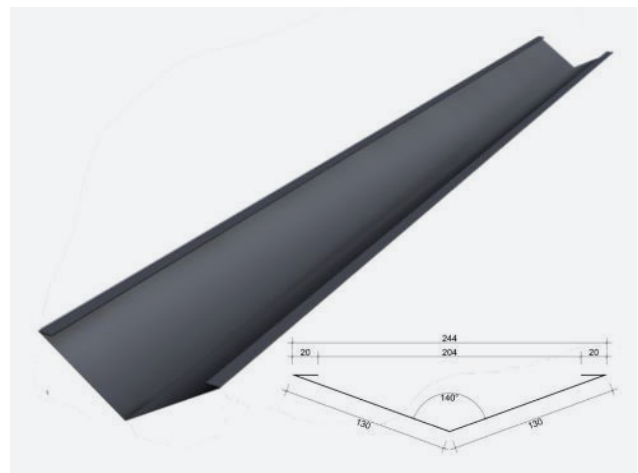
Rounded Ridge Cap.



Side Wall Flashing.



Under Tile Flashing.



Valley Flashing.



Accreditation & membership.

IINSTIMBI Solutions SA (Pty) Ltd is registered, approved, certified & a member of all the required institutions affiliated with ABT building practices.

- AGREMENT SOUTH AFRICA
- SABS (South African Bureau of Standards)
- NHBRC (National Home Builders Registration Council)
- CIDB (Construction Industry Development Board)
- FORTIS BUILDING SYSTEM
- SASFA (Southern African Light Steel Frame Association)





Meet the team.



Tateati Shapalo

Managing Director

Mr. Shapalo is the founder, managing director and majority shareholding partner of IINSTIMBI Solutions SA (Pty) Ltd. Mr. Shapalo is a qualified quantity surveyor and project management professional with over seven years' experience in pre and post construction management of projects. He is well vested in quantity estimation, preparation of interim payment certificates, progress bills and their certification, verification of subcontractor submitted bills, preparation of certification of variation orders, preparation of enquiries and their subsequent reviewing for subletting works and cost controlling on-going projects.

Mr. Shapalo holds a Bachelor of Technology: Quantity Surveying, Bachelor of Technology: Construction Management (Facility Management) and a National Diploma: Building Science from the Cape Peninsula University of Technology in Cape Town, South Africa.



Sibusiso Mbeka

Operations Director

Mr. Mbeka is a qualified quantity surveyor and a registered candidate quantity surveyor with the South African Council for the quantity surveying profession.

He has over 10 years experience in the construction industry, having spent a number of years involved in the development of the public and private sector in and around Cape Town. Mr Mbeka has been involved in projects like the Kuyasa Library in Khayelitsha, the UCT Hiddingh Campus Plaza in Cape Town, the West Coast College Courtyard in Saldanha, the Langebaan and Donkergat Kitchen upgrades in the West Coast, the N2 Gateway Housing Project in Boys Town and the Perivale Primary School whilst at Martin & East and Milestone Construction where he held the position of a quantity surveyor and a project manager respectively.

Mr Mbeka is passionate about the role that the construction industry plays in building communities. Mr Mbeka holds a Bachelor of Technology: Quantity Surveying (Cum Laude) and a National Diploma: Building (Quantity Surveying and Construction Management) from the Cape Peninsula University of Technology, Cape Town, South Africa.



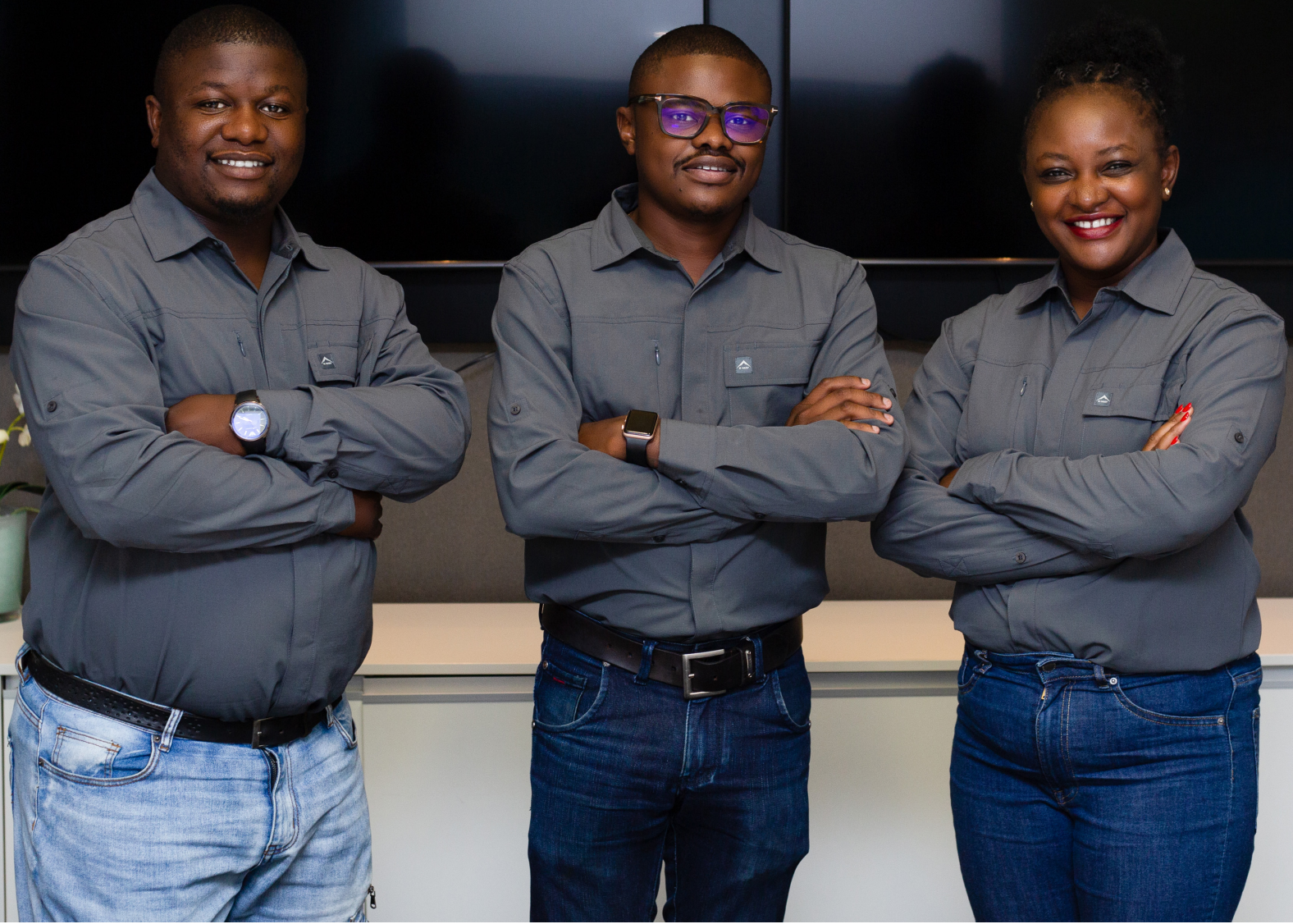
Jennifer Hamukwaya

Financial Director

Mrs. Hamukwaya serves as the Executive for the Finance and Administration Department at IINSTIMBI Solutions SA (Pty) Ltd. Her role entails, guiding and advising management on financial decisions based on sound policies and procedures that comply with statutory and regulatory requirements.

Mrs. Hamukwaya is a Chartered Accountant registered with the institute of Chartered Accountants of Namibia. She completed her articles with Deloitte, having worked in Audit and Assurance. In addition, Jennifer possesses a Post Graduate Diploma in Accounting from Rhodes University in the Eastern Cape, South Africa and a Bachelor's Degree in accounting from the University of Namibia. She also completed an Executive Development Programme through the University of Stellenbosch, South Africa.

Jennifer serves on the following boards: the Audit Development Committee of the Public Accountants and Auditors Board as well as a Board Director of the Namibia Institute of Pathology.



||INTSIMBI SOLUTIONS SA (PTY) LTD

CAPE TOWN



IINTSIMBI SOLUTIONS SA (PTY) LTD

CAPE TOWN

*Unit 45, Frazzitta Business Park
Cnr of Koeberg Road & Freedom Way
Milnerton, 7441
Cape Town, South Africa*

sales@iintsimbi.co.za

Tateati Shapalo  +27 74 258 5905  +264 81 207 5488 tateati@iintsimbi.co.za
Sibusiso Mbeka   +27 71 489 2845 sibu@iintsimbi.co.za